

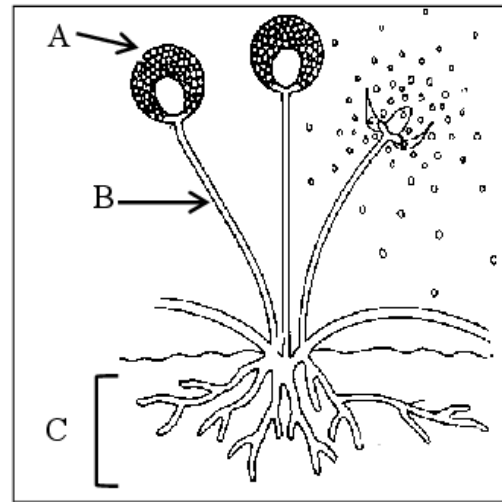
Question 1

8. In relation to moulds, identify parts A, B and C as shown on the diagram. (6)

A \_\_\_\_\_

B \_\_\_\_\_

C \_\_\_\_\_



Question 2

8. Differentiate between each of the following micro-organisms: (6)

*Aerobic micro-organisms* \_\_\_\_\_

\_\_\_\_\_

*Anaerobic micro-organisms* \_\_\_\_\_

\_\_\_\_\_

*Facultative micro-organisms* \_\_\_\_\_

\_\_\_\_\_

Question 3

3.(c) In relation to primary schools there has been much discussion about the inherited pattern of denominational school patronage and the rights of citizens in a more culturally and religiously diverse contemporary Irish society.

*(The Forum on Patronage and Pluralism in the Primary Sector, Report of the Forum's Advisory group 2012)*

Discuss primary level education in Ireland.

Refer to:

- choice / types of primary school
- curriculum offered
- educational supports / resources
- provision for pupils with special needs.

(30)

## Question 4

7. List **five** conditions required for the growth of moulds. (6)

(i) \_\_\_\_\_

(ii) \_\_\_\_\_

(iii) \_\_\_\_\_

(iv) \_\_\_\_\_

(v) \_\_\_\_\_

## Question 5

6. State **one** use of each of the following fungi in food production. (6)

*Moulds* \_\_\_\_\_

\_\_\_\_\_

*Yeast* \_\_\_\_\_

\_\_\_\_\_

*Large Fungi* \_\_\_\_\_

\_\_\_\_\_

## Question 6

3.(a) 'It would appear that an increasing number of parents in Ireland are now recognising the importance of early childhood education, with many looking to enrol their children in pre-schools and Montessori facilities.'

*(Press release, 2007)*

(i) Discuss the purpose of education in relation to the physical, emotional, moral and intellectual development of the child. (24)

(ii) Comment on how socio-economic status impacts on equality of opportunity in education. (15)

(iii) Name and give an account of **one** national initiative that improves access to education. (11)

## Question 7

- 3.(b) A rapidly changing society makes new demands on the State to deliver a school that reflects the diversity of the community it serves.**
- (i) In relation to the above statement, analyse how the supports provided in schools accommodate the educational requirements of
- pupils with special needs **and**
  - pupils from different ethnic backgrounds. **(18)**
- (ii) Outline the contribution of education to the socialisation of young children. **(12)**

## Question 8

- 3.(a) ‘Less than 15 percent of Leaving Certificate students in some poorer areas of Dublin are progressing to third level while most schools in south Dublin have a progression rate of 100 percent.’**  
*(The Irish Times, 16<sup>th</sup> November 2010)*
- (i) Analyse the principle factors that influence educational achievement. **(24)**
- (ii) Discuss **four** factors that contribute to the increasing demand for adult and second chance education in Ireland. **(16)**
- (iii) Name and give details of **one** contemporary initiative that has improved access for students to third level education. **(10)**